

ÉCOLE DE CURIOSITÉS

2023 AUTUMN WINTER COLLECTION

Nina

Order deadline: Monday 13th March 2023

Payment Terms : 30% on order confirmation / 70% before delivery

Shipping terms: Beginning of July 2023 – End of September 2023

Order minimum amount : 5 000 €

Order minimum quantity : 3 pcs per item

Suggested retail mark up : 2.7

*By placing an order, the buyer acknowledges having read and accepted the general conditions of sale of EDC company which appear on the last page of each document.

1

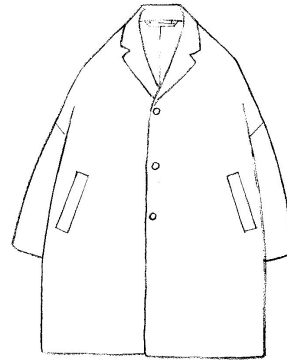
| |
|--|
| Item: COAT |
| Type: WOMEN'S WOVEN |
| Style: ROGER |
| Material: Melton cashmere mix |
| Composition: 89% Wool 10% Cashmere 1% Silk |
| EX-WORKS: 820 € |
| suggested retail price : 2,214 € |
| Country of origin: Made in France |



| COL | XS | S | M | L | XL | Total |
|-----------------|----|---|---|---|----|-------|
| 86 Dark navy | | | | | | |
| | | | | | | |
| | | | | | | |
| | | | | | | |

2

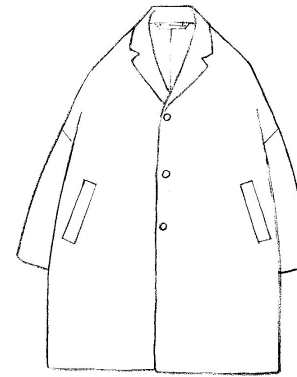
| |
|-----------------------------------|
| Item: COAT |
| Type: WOMEN'S WOVEN |
| Style: COPER |
| Material: Boiled wool jersey |
| Composition: 100% Wool |
| EX-WORKS: 630 € |
| suggested retail price : 1,701 € |
| Country of origin: Made in France |



| COL | XS | S | M | L | XL | Total |
|---------------------|----|---|---|---|----|-------|
| 23 Sulfur yellow | | | | | | |
| 87 Dark navy | | | | | | |
| | | | | | | |
| | | | | | | |

3

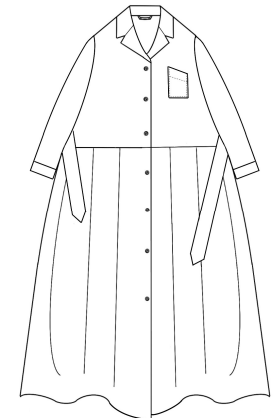
| |
|-----------------------------------|
| Item: COAT |
| Type: MEN'S WOVEN |
| Style: MEN'S COPER |
| Material: Boiled wool jersey |
| Composition: 100% Wool |
| EX-WORKS: 635 € |
| suggested retail price : 1,714 € |
| Country of origin: Made in France |



| COL | S | M | L | Total |
|---------------------|---|---|---|-------|
| 23 Sulfur yellow | | | | |
| 87 Dark navy | | | | |
| | | | | |
| | | | | |

4

| |
|-----------------------------------|
| Item: COAT |
| Type: WOMEN'S WOVEN |
| Style: DINA |
| Material: Soft cotton twill |
| Composition: 100% Cotton |
| EX-WORKS: 545 € |
| suggested retail price : 1,472 € |
| Country of origin: Made in France |



| COL | XS | S | M | L | XL | Total |
|-------------|----|---|---|---|----|-------|
| 11 Ivory | | | | | | |
| 97 Black | | | | | | |
| | | | | | | |
| | | | | | | |

5

| |
|-----------------------------------|
| Item: JACKET |
| Type: WOMEN'S WOVEN |
| Style: JESSICA |
| Material: Boiled wool jersey |
| Composition: 100% Wool |
| EX-WORKS: 465 € |
| suggested retail price : 1,256 € |
| Country of origin: Made in France |



| COL | XS | S | M | L | XL | Total |
|---------------------|----|---|---|---|----|-------|
| 23 Sulfur yellow | | | | | | |
| 87 Dark navy | | | | | | |
| | | | | | | |
| | | | | | | |

6

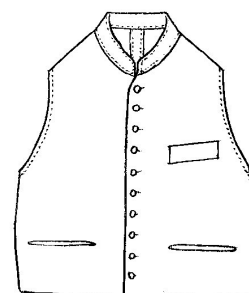
| |
|----------------------------------|
| Item: JACKET |
| Type: WOMEN'S WOVEN |
| Style: JOE |
| Material: Brushed wool tumbler |
| Composition: 100% Wool |
| EX-WORKS: 470 € |
| suggested retail price : 1,269 € |
| Country of origin: Made in Italy |



| COL | XS | S | M | L | XL | Total |
|-------------|----|---|---|---|----|-------|
| 98 Black | | | | | | |
| | | | | | | |
| | | | | | | |
| | | | | | | |

7

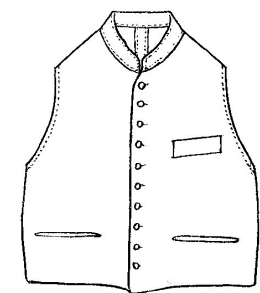
| |
|----------------------------------|
| Item: WAIST COAT |
| Type: WOMEN'S WOVEN |
| Style: GILLES |
| Material: Soft cotton twill |
| Composition: 100% Cotton |
| EX-WORKS: 340 € |
| suggested retail price : 918 € |
| Country of origin: Made in Italy |



| COL | XS | S | M | L | XL | Total |
|-------------|----|---|---|---|----|-------|
| 11 Ivory | | | | | | |
| 97 Black | | | | | | |
| | | | | | | |
| | | | | | | |


8

| |
|----------------------------------|
| Item: WAIST COAT |
| Type: MEN'S WOVEN |
| Style: MEN'S GILLES |
| Material: Soft cotton twill |
| Composition: 100% Cotton |
| EX-WORKS: 345 € |
| suggested retail price : 931 € |
| Country of origin: Made in Italy |

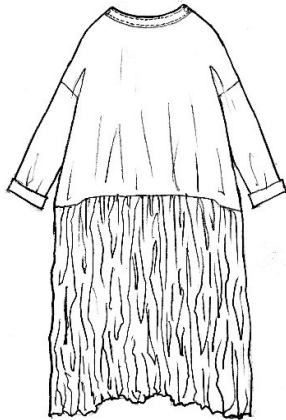


| COL | S | M | L | Total |
|-------------|---|---|---|-------|
| 11 Ivory | | | | |
| 97 Black | | | | |
| | | | | |
| | | | | |


9

| | | | | | | |
|--|----|---|---|---|----|-------|
| Item: DRESS | | | | | | |
| Type: WOMEN'S WOVEN | | | | | | |
| Style: NINA | | | | | | |
| Material: Printed organic cotton | | | | | | |
| Composition: 100% Cotton | | | | | | |
| EX-WORKS: 490 € | | | | | | |
| suggested retail price : 1,323 € | | | | | | |
| Country of origin: Made in France | | | | | | |
|  | | | | | | |
| COL | XS | S | M | L | XL | Total |
| 05 Almond x white | | | | | | |
| 85 Navy x white | | | | | | |
| 91 Black x white | | | | | | |
| | | | | | | |


10

| | | | | | | |
|---|----|---|---|---|----|-------|
| Item: DRESS | | | | | | |
| Type: WOMEN'S WOVEN | | | | | | |
| Style: VANESSA | | | | | | |
| Material: Silk cotton poplin | | | | | | |
| Composition: 51% Silk 49% Cotton | | | | | | |
| EX-WORKS: 620 € | | | | | | |
| suggested retail price : 1,674 € | | | | | | |
| Country of origin: Made in France | | | | | | |
|  | | | | | | |
| COL | XS | S | M | L | XL | Total |
| 84 Dark navy | | | | | | |
| 96 Black | | | | | | |
| | | | | | | |


11

| | | | | | | |
|--|----|---|---|---|----|-------|
| Item: DRESS | | | | | | |
| Type: WOMEN'S WOVEN | | | | | | |
| Style: DAPHNE | | | | | | |
| Material: Washed typewriter cotton | | | | | | |
| Composition: 100% Cotton | | | | | | |
| EX-WORKS: 475 € | | | | | | |
| suggested retail price : 1,283 € | | | | | | |
| Country of origin: Made in France | | | | | | |
|  | | | | | | |
| COL | XS | S | M | L | XL | Total |
| 02 White | | | | | | |
| 83 Navy | | | | | | |
| | | | | | | |


12

| | | | | | | |
|---|----|---|---|---|----|-------|
| Item: SHIRT | | | | | | |
| Type: WOMEN'S WOVEN | | | | | | |
| Style: DUNCAN | | | | | | |
| Material: Brushed ox cotton | | | | | | |
| Composition: 100% Cotton | | | | | | |
| EX-WORKS: 310 € | | | | | | |
| suggested retail price : 837 € | | | | | | |
| Country of origin: Made in France | | | | | | |
|  | | | | | | |
| COL | XS | S | M | L | XL | Total |
| 01 White | | | | | | |
| 05 Ivory | | | | | | |
| | | | | | | |


13

| | | | | |
|---|---|---|---|-------|
| Item: SHIRT | | | | |
| Type: MEN'S WOVEN | | | | |
| Style: MEN'S DUNCAN | | | | |
| Material: Brushed ox cotton | | | | |
| Composition: 100% Cotton | | | | |
| EX-WORKS: 315 € | | | | |
| suggested retail price : 850 € | | | | |
| Country of origin: Made in France | | | | |
|  | | | | |
| COL | S | M | L | Total |
| 01 White | | | | |
| 05 Ivory | | | | |
| | | | | |
| | | | | |


14

| | | | | | | |
|--|----|---|---|---|----|-------|
| Item: SHIRT | | | | | | |
| Type: WOMEN'S WOVEN | | | | | | |
| Style: BESSIE | | | | | | |
| Material: Washed typewriter cotton | | | | | | |
| Composition: 100% Cotton | | | | | | |
| EX-WORKS: 285 € | | | | | | |
| suggested retail price : 770 € | | | | | | |
| Country of origin: Made in France | | | | | | |
|  | | | | | | |
| COL | XS | S | M | L | XL | Total |
| 02 White | | | | | | |
| 83 Navy | | | | | | |
| | | | | | | |
| | | | | | | |


15

| | | | | | | |
|---|----|---|---|---|----|-------|
| Item: SHIRT | | | | | | |
| Type: WOMEN'S WOVEN | | | | | | |
| Style: TRACY | | | | | | |
| Material: Brushed silk | | | | | | |
| Composition: 100% Silk | | | | | | |
| EX-WORKS: 390 € | | | | | | |
| suggested retail price : 1,053 € | | | | | | |
| Country of origin: Made in France | | | | | | |
|  | | | | | | |
| COL | XS | S | M | L | XL | Total |
| 03 Off white | | | | | | |
| 82 Dark navy | | | | | | |
| 95 Liquorice black | | | | | | |
| | | | | | | |
| | | | | | | |


16

| | | | | |
|---|---|---|---|-------|
| Item: SHIRT | | | | |
| Type: MEN'S WOVEN | | | | |
| Style: MEN'S TRACY | | | | |
| Material: Brushed silk | | | | |
| Composition: 100% Silk | | | | |
| EX-WORKS: 395 € | | | | |
| suggested retail price : 1,066 € | | | | |
| Country of origin: Made in France | | | | |
|  | | | | |
| COL | S | M | L | Total |
| 03 Off white | | | | |
| 82 Dark navy | | | | |
| 95 Liquorice black | | | | |
| | | | | |
| | | | | |

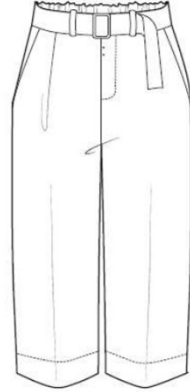
17

| Item: SHIRT | | | | | | |
|---|----|---|---|---|----|-------|
| Type: WOMEN'S WOVEN | | | | | | |
| Style: BRIGITTE | | | | | | |
| Material: Printed organic cotton | | | | | | |
| Composition: 100% Cotton | | | | | | |
| EX-WORKS: 300 € | | | | | | |
| suggested retail price : 810 € | | | | | | |
| Country of origin: Made in France | | | | | | |
|  | | | | | | |
| COL | XS | S | M | L | XL | Total |
| 05 Almond x white | | | | | | |
| 85 Navy x white | | | | | | |
| 91 Black x white | | | | | | |
| | | | | | | |

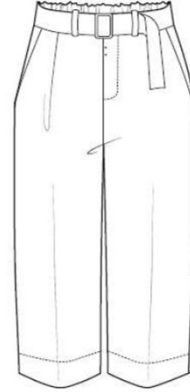
18

| Item: SHIRT | | | | | | |
|--|----|---|---|---|----|-------|
| Type: WOMEN'S WOVEN | | | | | | |
| Style: SALLY | | | | | | |
| Material: Printed organic cotton | | | | | | |
| Composition: 100% Cotton | | | | | | |
| EX-WORKS: 360 € | | | | | | |
| suggested retail price : 972 € | | | | | | |
| Country of origin: Made in France | | | | | | |
|  | | | | | | |
| COL | XS | S | M | L | XL | Total |
| 05 Almond x white | | | | | | |
| 85 Navy x white | | | | | | |
| 91 Black x white | | | | | | |
| | | | | | | |

19

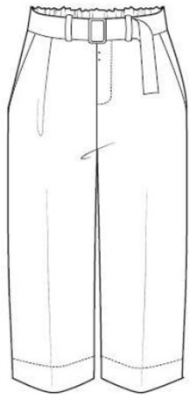
| Item: PANTS | | | | | | |
|---|----|---|---|---|----|-------|
| Type: WOMEN'S WOVEN | | | | | | |
| Style: PAOLA | | | | | | |
| Material: Peach skin cotton twill | | | | | | |
| Composition: 100% Cotton | | | | | | |
| EX-WORKS: 300 € | | | | | | |
| suggested retail price : 810 € | | | | | | |
| Country of origin: Made in France | | | | | | |
|  | | | | | | |
| COL | XS | S | M | L | XL | Total |
| 80 Stone gray | | | | | | |
| | | | | | | |
| | | | | | | |
| | | | | | | |

20

| Item: PANTS | | | | |
|---|---|---|---|-------|
| Type: MEN'S WOVEN | | | | |
| Style: MENS PAOLA | | | | |
| Material: Peach skin cotton twill | | | | |
| Composition: 100% Cotton | | | | |
| EX-WORKS: 305 € | | | | |
| suggested retail price : 823 € | | | | |
| Country of origin: Made in France | | | | |
|  | | | | |
| COL | S | M | L | Total |
| 80 Stone gray | | | | |
| | | | | |
| | | | | |
| | | | | |

21

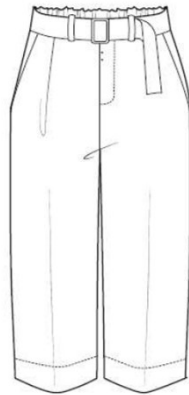
| |
|------------------------------------|
| Item: PANTS |
| Type: WOMEN'S WOVEN |
| Style: PAOLA |
| Material: Peach skin cotton canvas |
| Composition: 100% Cotton |
| EX-WORKS: 300 € |
| suggested retail price : 810 € |
| Country of origin: Made in France |



| COL | XS | S | M | L | XL | Total |
|-------------|----|---|---|---|----|-------|
| 99 Black | | | | | | |
| | | | | | | |
| | | | | | | |
| | | | | | | |

22

| |
|------------------------------------|
| Item: PANTS |
| Type: MEN'S WOVEN |
| Style: MEN'S PAOLA |
| Material: Peach skin cotton canvas |
| Composition: 100% Cotton |
| EX-WORKS: 305 € |
| suggested retail price : 823 € |
| Country of origin: Made in France |



| COL | S | M | L | Total |
|-------------|---|---|---|-------|
| 99 Black | | | | |
| | | | | |
| | | | | |
| | | | | |

23

| |
|-----------------------------------|
| Item: PANTS |
| Type: WOMEN'S WOVEN |
| Style: PETER |
| Material: Peach skin cotton twill |
| Composition: 100% Cotton |
| EX-WORKS: 275 € |
| suggested retail price : 743 € |
| Country of origin: Made in France |



| COL | XS | S | M | L | XL | Total |
|------------------|----|---|---|---|----|-------|
| 80 Stone gray | | | | | | |
| | | | | | | |
| | | | | | | |
| | | | | | | |

24

| |
|-----------------------------------|
| Item: PANTS |
| Type: MEN'S WOVEN |
| Style: MEN'S PETER |
| Material: Peach skin cotton twill |
| Composition: 100% Cotton |
| EX-WORKS: 280 € |
| suggested retail price : 756 € |
| Country of origin: Made in France |



| COL | S | M | L | Total |
|------------------|---|---|---|-------|
| 80 Stone gray | | | | |
| | | | | |
| | | | | |
| | | | | |

25

| |
|------------------------------------|
| Item: PANTS |
| Type: WOMEN'S WOVEN |
| Style: PETER |
| Material: Peach skin cotton canvas |
| Composition: 100% Cotton |
| EX-WORKS: 275 € |
| suggested retail price : 743 € |
| Country of origin: Made in France |



| COL | XS | S | M | L | XL | Total |
|-------------|----|---|---|---|----|-------|
| 99 Black | | | | | | |
| | | | | | | |
| | | | | | | |
| | | | | | | |

26

| |
|------------------------------------|
| Item: PANTS |
| Type: MEN'S WOVEN |
| Style: MENS PETER |
| Material: Peach skin cotton canvas |
| Composition: 100% Cotton |
| EX-WORKS: 280 € |
| suggested retail price : 756 € |
| Country of origin: Made in France |



| COL | | S | M | L | Total |
|-------------|--|---|---|---|-------|
| 99 Black | | | | | |
| | | | | | |
| | | | | | |
| | | | | | |

27

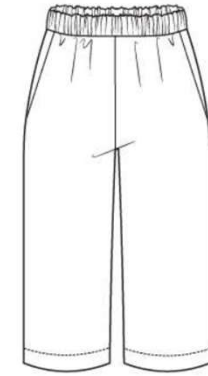
| |
|-----------------------------------|
| Item: PANTS |
| Type: WOMEN'S WOVEN |
| Style: PHILIP |
| Material: Brushed wool tumbler |
| Composition: 100% Wool |
| EX-WORKS: 365 € |
| suggested retail price : 986 € |
| Country of origin: Made in France |



| COL | XS | S | M | L | XL | Total |
|-------------|----|---|---|---|----|-------|
| 98 Black | | | | | | |
| | | | | | | |
| | | | | | | |
| | | | | | | |

28

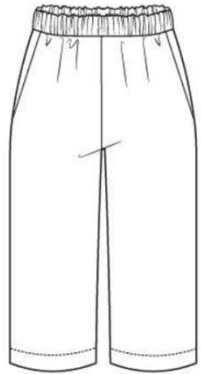
| |
|-----------------------------------|
| Item: PANTS |
| Type: WOMEN'S WOVEN |
| Style: PIERRE |
| Material: Brushed wool tumbler |
| Composition: 100% Wool |
| EX-WORKS: 390 € |
| suggested retail price : 1,053 € |
| Country of origin: Made in France |



| COL | XS | S | M | L | XL | Total |
|-------------|----|---|---|---|----|-------|
| 98 Black | | | | | | |
| | | | | | | |
| | | | | | | |
| | | | | | | |

29

| |
|-----------------------------------|
| Item: PANTS |
| Type: MEN'S WOVEN |
| Style: MEN'S PIERRE |
| Material: Brushed wool tumbler |
| Composition: 100% Wool |
| EX-WORKS: 395 € |
| suggested retail price : 1,066 € |
| Country of origin: Made in France |



| COL | S | M | L | Total |
|-------------|---|---|---|-------|
| 98 Black | | | | |
| | | | | |
| | | | | |
| | | | | |

30

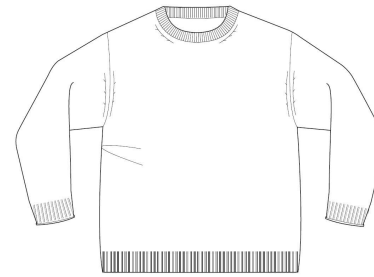
| |
|-----------------------------------|
| Item: SKIRT |
| Type: WOMEN'S WOVEN |
| Style: SOLANGE |
| Material: Soft cotton twill |
| Composition: 100% Cotton |
| EX-WORKS: 440 € |
| suggested retail price : 1,188 € |
| Country of origin: Made in France |



| COL | XS | S | M | L | XL | Total |
|-------------|----|---|---|---|----|-------|
| 11 Ivory | | | | | | |
| 97 Black | | | | | | |
| | | | | | | |
| | | | | | | |

31

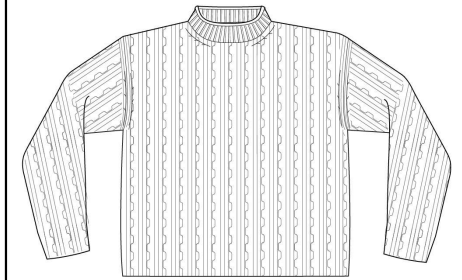
| |
|-----------------------------------|
| Item: SWEATER |
| Type: WOMEN'S KNITWEAR |
| Style: KIKI |
| Material: Cloudy flammé knit |
| Composition: 96% Wool 4% Cashmere |
| EX-WORKS: 290 € |
| suggested retail price : 783 € |
| Country of origin: Made in Italy |



| COL | XS | S | M | L | XL | Total |
|---------------------|----|---|---|---|----|-------|
| 04 Ivory | | | | | | |
| 14 Ficelle Beige | | | | | | |
| 94 Black | | | | | | |
| | | | | | | |

32

| |
|-----------------------------------|
| Item: SWEATER |
| Type: WOMEN'S KNITWEAR |
| Style: KEITH |
| Material: Fisherman gaufrette rib |
| Composition: 96% Wool 4% Cashmere |
| EX-WORKS: 330 € |
| suggested retail price : 891 € |
| Country of origin: Made in Italy |



| COL | XS | S | M | L | XL | Total |
|---------------------|----|---|---|---|----|-------|
| 04 Ivory | | | | | | |
| 14 Ficelle Beige | | | | | | |
| 94 Black | | | | | | |
| | | | | | | |